

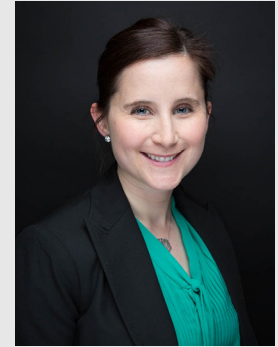
Office: 204-6500
Attendance / Safe Arrival: 204-6506
Food Services: 204-6513

School Nurse: 204-6500
School Social Worker: 204-6500
Badger Bus: 298-5471

Visit us online: lindbergh.mmsd.org



facebook.com/MMSDLindbergh



Principal
Lindsay Maglio, interim



Mission Statement

The mission of Lindbergh Elementary School, the center of a multicultural neighborhood, is to ensure academic success for each student, enabling children to become life-long learners and productive members of society, through collaborative efforts with staff, families and community.

School Hours

Mondays 8:30 a.m. - 1:50 p.m. (Early release)
Tuesdays-Fridays 8:30 a.m. - 3:22 p.m.

Picking up your child during the school day

To ensure the safety of your child, please send a note in advance to your child's teacher or the office. We require parents to come into our office and sign out the student. We will call the classroom to have the student sent down to the office to meet the parents. Please remember anyone picking up a student must be authorized and listed in Infinite Campus. Once school is in session, no non-school staff (including parents) will be allowed to go to a classroom unaccompanied and pick up a child.

Traffic Safety, Parking, Pick Up / Drop Off Information

Please follow the drop off and pick up guidelines found on our website at <https://lindbergh.madison.k12.wi.us>

After-School Child Care

MSCR Safe Haven, Kennedy Heights and Kindercare are after-school providers.